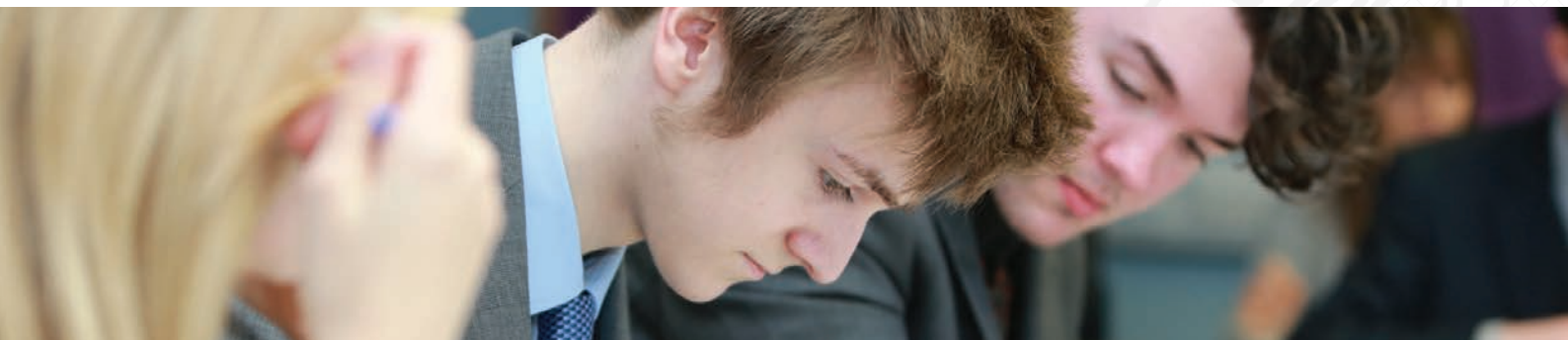




Spalding Grammar School

S I X T H F O R M

2018 Prospectus



Welcome

The transition from GCSE to A Level is considerable and can be a daunting prospect for many students; it requires patience, perseverance and plentiful practice. The nature of studying also changes significantly in the Sixth Form and, as taught lessons are fewer than at GCSE, so the need to develop effective time-management and independent organisation skills becomes greater. Whilst we cannot promise you that your transition into Sixth Form will be without difficulty, we can promise that you will be supported every step of the way.

Spalding Grammar School Sixth Form is a large, successful, mixed Sixth Form of approximately 250 students, where there is an emphasis on academic excellence, delivered through a rich, relevant and stimulating curriculum with a strong academic core.

Students who join our Sixth Form benefit from a broad range of A Level subjects, complemented by an extensive enrichment programme that enables them to stand out from the crowd. Such choice and diversity means that we can offer all students a programme of study well suited to individual needs, which in turn promotes very positive attitudes to learning and ensures that students make good progress across all aspects of their study programmes.

Just as in the main school, a cornerstone of our approach in the Sixth Form is the strength of relationships between staff and students, and we are committed to supporting the success of every student whether they are 'home-grown', or join us from another school in the region or beyond. The care and guidance that students receive is outstanding, and the vertical tutor system groupings, together with the strong support provided by pastoral staff, not only contribute significantly to students' enjoyment of school but also enable students to develop clear and ambitious plans for their future. There is a real sense of community at Spalding Grammar School and the Sixth Form takes the lead in developing this community spirit through House activities, charity events and mentoring younger students.

If you are stimulated by academic challenges, want the opportunity to develop a wide range of talents, enjoy taking a leadership role and are looking to be part of a caring, friendly school, then I invite you to consider our Sixth Form.

Mr B A Love

Director of Sixth Form Studies



Curriculum and Learning

Naturally, academic success will be a major priority for you, and you can be confident that at Spalding Grammar School we support, encourage and facilitate academic excellence.

As a student in our Sixth Form you can choose from 28 different subjects and languages. Additionally, all students are given the opportunity to choose from a diverse range of enrichment subjects to complement their core curriculum.

Sixth Form students value our positive ethos, where academic aspiration is fully encouraged and supported. Our teachers have a very high level of expertise in preparing students for A Level and beyond, and students thrive in a learning environment where everyone is keen to succeed.

Examination results are one of the key measures of our Sixth Form students' achievements. In 2017, the School achieved a 99% pass rate with 28% of the grades awarded being A*-A, and 57% being A*-B.

If you join our Sixth Form, we shall expect enthusiasm, commitment, and of course, a dedication to your chosen course of study, which will lead to the highest results at A Level.

Art and Design	Economics	Geography	Latin	Physics
Biology	Engineering	German	Law	Psychology
Business Studies	English Language	Government and Politics	Mathematics	Sociology
Chemistry	English Literature	Early Modern History	Mathematics (Further)	Spanish
Computer Science	Ethics and Philosophy	Modern History	Music	
Design Technology	French	IT	Physical Education	

'Teachers have good subject knowledge, use high-quality questioning to check pupils' understanding and plan activities which are sharply focused on developing examination skills.' Ofsted



Pathways

From 2015 to 2017 the Government introduced some fundamental changes to the A Level system and our aim is to offer students the opportunities that have arisen from this new system, by bringing in a greater degree of personalisation into our Sixth Form offer. Universities – up to, and including, the Russell Group and Oxbridge universities – are making their offers based on three subjects at A Level, and the competition for places is harder than ever, increasing the need to achieve top grades. For the majority, achieving these grades is the goal and we want to support them in maximising their chances of obtaining a university place.

To this end, all students applying to join our Sixth Form are required to choose three A Level subjects which will form their core curriculum, and they will commit to these for the full two years. The only exceptions to this will be students wishing to study Mathematics and Further Mathematics, Triple Science (Biology, Chemistry and Physics) and Mathematics, or Engineering and Mathematics, who will be permitted to choose four A Level subjects. Again, these students must commit to these subjects for the full two years. Students can choose any combination of subjects with the following restrictions: only one History may be studied; and both Engineering and Physics must be studied in partnership with Mathematics.

Following the changes to the A Level system, there will no longer be an option for students to discontinue an A Level subject at the end of Year 12, and all students entering Year 13 must study three A Levels. Additionally, given that AS Levels are now only worth 40% of an A Level and that AS results no longer count towards an A Level, students will not sit AS exams in reformed subjects at the end of Year 12. We, like many schools, have taken the view that to lock students into a Year 12 diet of AS can only dilute performance in the reformed A Level examinations.

A strength of our curriculum comes from giving students a free choice in the subject combination they want to study. We then build the teaching blocks around the students' choices when many schools and colleges predetermine the teaching blocks and limit the combination of subjects that an individual can choose.

On occasion, particular subject combinations have not been possible to timetable, and subjects that have attracted too few students have been deemed to be not economically viable. Should such a circumstance arise, we will contact individuals affected as soon as possible after the application deadline.



Enrichment

In a competitive world, it is no longer enough simply to do well in examinations in order to secure a place at university, or a good job. Each student needs to stand out as a well-rounded individual with a range of experiences, striking personal attributes, achievements and interests that complement those professional qualities that have enabled them to succeed in their studies.

On top of their core curriculum, students are also required to choose an enrichment subject. The only exception to this will be students studying four A Levels, who, given the increased demands of their chosen curriculum, may opt out of enrichment and use the time for private study instead.

To this end, Sixth Form students benefit from an extensive enrichment programme, through which they are encouraged to acquire new interests or develop existing ones, fill gaps in their UCAS personal statement or CV, or add an extra dimension to their curriculum or perhaps the wider community.

Within this enrichment programme students may choose from a diverse range of subjects:

AS Classical Civilisation

Level 2 Award in Sports Leadership (SL2)

Cambridge Pre-U
Global Perspectives

Work Experience

Core Maths

Young Enterprise

Extended Project
Qualification (EPQ)

'Application rates for UK 18 year olds are at their highest levels since 2006, so it is becoming increasingly important for students to set themselves apart from their competitors. Our thriving enrichment programme allows them to do this.'

Mr B A Love, Director of Sixth Form Studies



Extra-Curricular

Sixth Form life offers numerous opportunities for students to develop their wide-ranging talents and use them to contribute to the School and the wider community.

Our school excels in sport, being successful in local and national competitions, and recognised as the best state school in the county for sport in 2014. With this in mind, all students are encouraged to continue their involvement in sport during the Sixth Form, and most receive two hours of games tuition per week.

School representative matches are centred around rugby, football, hockey and cricket, and are played during the games sessions on Wednesday afternoons or outside curriculum time.

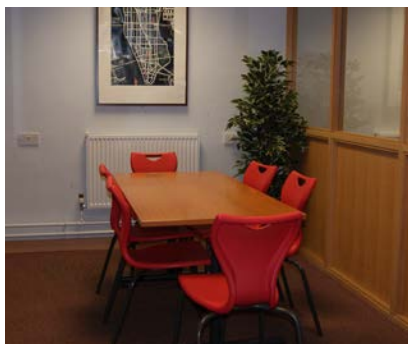
Alongside this designated time, the PE Department runs a thriving enrichment programme and a variety of clubs take place at lunchtime and after school.

The School Houses also compete in inter-House sports throughout the year, which culminates in Sports Day during the summer.

Drama and music are also a prominent feature of extra-curricular opportunities at SGS, in which the School has achieved high standards and gained an enviable reputation. Productions have ranged from a musical version of Shakespeare's 'The Tempest' to the Broadway musical 'Honk!', and we wait expectantly for the School's 2018 production of 'We Will Rock You'.

Every show offers a wealth of on-stage and backstage opportunities, whether it be controlling the lighting rigs, managing the props or taking centre stage in one of the leading roles!

There are also many events in the School calendar that enable students to perform in various groups including Christmas concerts, awards ceremonies and charity events. The groups include the school choir, a concert band, soul band and ukulele band. Musical theory is also taught to supplement instrumental/vocal studies.



Purpose-built Sixth Form Facilities

The nature of studying changes significantly in the Sixth Form and, as such, each student is allocated a fixed number of timetabled private study periods, designed to help them cope with the increased demands of A Level.

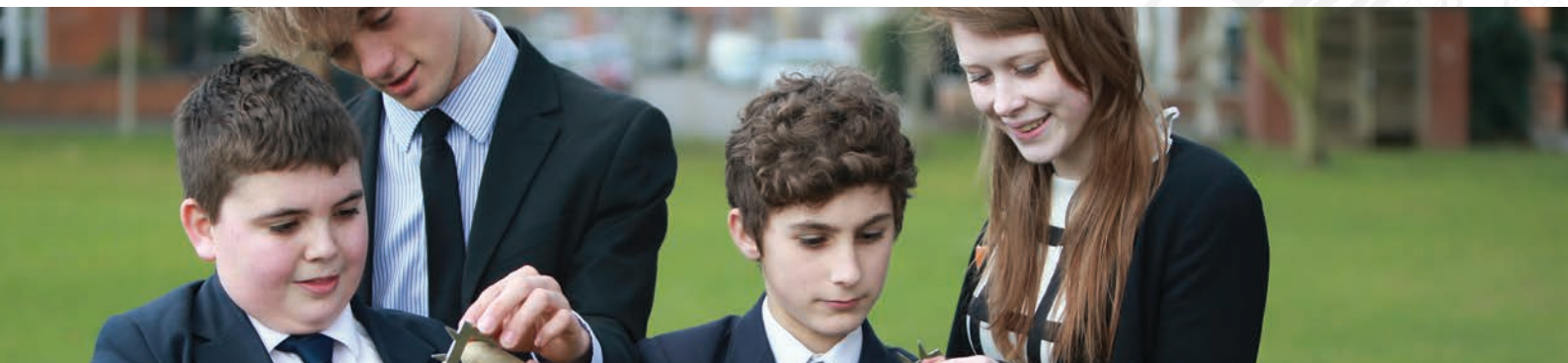
Private study is essential to students' development, giving them the opportunity to consolidate what they have been taught in lessons, and our purpose built Sixth Form Study Centre provides a base for silent and supervised private study. Research and in-depth study, reading around a topic, note making, organising notes and writing essays are all tasks best carried out at school, where there are resources and staff available.

The Sixth Form Study Centre is a flexible space, consisting of an open-plan study area, private study rooms for group work, and study booths for individual work, giving students the opportunity to personalise their learning environment.

As well as having access to networked PCs, enhanced Wi-Fi provision in these areas allows students to take advantage of new technologies to assist them with their studies well. Students are able to bring their own laptops, netbooks and tablets to school; access their own dedicated file areas on the school network and take full advantage of a wide range of 'on-line' resources.

In recognition of their growing maturity and independence, Sixth Form students are also given a fixed number of 'free' periods, and our Sixth Form Coffee Lounge provides them with a modern area in which to socialise and recharge their batteries between lessons. The number of free periods given to Year 13 students increases after Year 12.

'The facilities available to the Sixth Form, namely the Sixth Form Study Centre and Coffee Lounge, provide areas for us as a cohort to work but also relax in, in order to get the best results possible' Sam, Year 13



Support at Spalding Grammar School

The Director of Sixth Form Studies, Mr Love, ably supported by the Heads of House, will guide you through our application process, help you work out which subjects you can study and induct you into how academic life in our Sixth Form works.

Each Sixth Form student is placed in a vertical form of approximately 20 students from different Year groups, led by an experienced form tutor who has special responsibility for the academic and personal well-being of each member of the form. In addition, there are six Heads of House who support the tutors in helping Sixth Formers to make the best decisions, not merely in career matters but in general pastoral support. They do this largely through one-to-one academic tutorials with the student and their parents/carers.

As well as pastoral support, our well established House system forms the focus for a wide range of events, clubs and activities in which Sixth Formers play a leading role in organising and running.

They are also encouraged to act as mentors to the younger students within their form in a number of ways, including assisting the tutor with regular school planner checks, running the intra- house quiz during form period on a Friday, or perhaps helping them with their homework during private study.

All in all, the Sixth Form is a place where staff are always willing to 'go the extra mile' for students, and the standard and quality of guidance is such that you would have to look hard to find better elsewhere. Indeed, around 60 students from other schools integrate very successfully into our Sixth Form each year. Moreover, through the Senior Student Team (a team of 16 representatives that have been elected from within Year 13 by their peers and staff), Sixth Form students have an opportunity to play a fundamental role in ensuring that the experience of every student within the School is as positive and rewarding as possible.

'The academy's system of vertical tutoring [...] provides pupils with opportunities to act as role models and to take on positions of responsibility within the academy's pupil community.' Ofsted



Post-18 Preparation

The majority of our students decide to go on to Higher Education, and preparation for this starts early in Year 12. Students are given advice and guidance on how to research Higher Education courses and how to manage the electronic UCAS application process. Parents are also welcomed into School during Year 12 to attend an information evening concerning the UCAS journey and student finance. In addition, students are given advice and guidance on the writing of the Personal Statement, which is carried out and supervised in tutor groups and completed in the first term of Year 13.

Mock interviews are provided when necessary and past students are occasionally invited back to give advice to current Sixth Formers. Courses and 'taster sessions' are also advertised by e-mail throughout the year to provide students with an insight into careers, professions and undergraduate courses. Students applying to the Universities of Oxford and Cambridge benefit from dedicated specialist advice and support to help maximise their chances of success.

In 2017, 92% of Year 13 students who applied to study at university were accepted on to undergraduate courses and, of those, 20% secured places at Russell Group universities. An impressive four students secured their Oxbridge places with outstanding results, our highest for many years.

Needless to say, students considering other pathways are equally well supported and help and advice is offered throughout the Sixth Form concerning apprenticeships, school leaver programmes and gap year opportunities. We continue to build strong relationships with local apprenticeship providers and local businesses, and each year the School hosts a careers fair in a bid to raise students' awareness of a wide range of career and educational opportunities.

'Pupils receive effective advice and guidance in preparation for their next steps after sixth form. Pupils receive information about the different pathways available to them. They receive valuable support in making applications to university, and are provided with information about finance.' Ofsted



Student Profiles

Daniel, Year 13

“ Having attended Spalding Grammar School (SGS) for the previous 5 years, entering the Sixth Form for my A Level studies was a natural progression. Sixth Form students at SGS benefit from a strong balance between focused ‘contact’ time and study periods, allowing for an increased level of independence in learning which bridges the gap between school and university. This is not to say that students are expected to fully manage their non-contact time; the Sixth Form at SGS forms a supportive community where students can develop and flourish at their own pace. The curriculum offered at SGS is broad and diverse, yet academic at its core; I have personally benefited from studying Pre-U Global Perspectives as an enrichment alongside my A-level subjects, an opportunity that I feel will greatly enrich my Oxbridge application. ”

William, Year 13

“ Transferring to Spalding Grammar School from the Peele Community College initially seemed like a daunting process and a big leap from what I had been used to. I had chosen to apply to the Grammar School as I believed it would be the best facility to advance my academic progress, and give me the best support for applying to University. After attaining my grades I realised my fears of joining the school had been misplaced as its friendly, welcoming and open atmosphere meant that I was quickly able to adapt to the learning style of the school and fit well into my chosen subjects. ”

Gloria, Year 13

“ I joined Spalding Grammar from The Gleed Academy, formerly known as Sir John Gleed Academy and since being here I have received ongoing encouragement and support in my A Level studies which has allowed me to make significant academic progress. Also, the school takes pride in all of its students and achievements and I wanted to be a part of that. ”

Shana, Year 13

“ I can honestly say that Spalding Grammar School has been the best decision I could have made when choosing where to go for Sixth Form. Coming from Spalding High School, I was initially very nervous about leaving familiar faces behind, but I knew I had to push myself to do what was right for me – change. I wanted to challenge myself to do something out of my comfort zone but, at the same time, was concerned that I would lose the support system I had built up at the High. From my first day here, I have felt comfortable in my surroundings and welcomed by everyone. All the teachers are approachable and everyone looks out for one another. It has allowed me to grow in confidence, along with introducing me to new opportunities, people and memories which will stay with me forever. ”

Admissions

Entry Requirements

GCSEs in England are being reformed and will be graded with a new scale from 9 to 1, with 9 being the highest grade. English Language, English Literature and Maths were the first to be graded from 9 to 1 in 2017. Another 20 subjects will have 9 to 1 grading in 2018, with others following in 2019. During this transition, students will receive a mixture of letter and number grades. For the purposes of the entry requirements below, the following equivalencies will apply:

Current GCSE Grading Structure	New GCSE Grading Structure
Grade A*	9
Grade A*/A	8
Grade A	7
Grade B	6
Grade B/C	5
Grade C	4

Admission to Sixth Form courses is dependent upon students meeting all the following requirements:

1. Six GCSEs A*-C or 9-4 including a minimum of Grade 4 in Mathematics, English Language and English Literature.
2. In addition, students must also meet the subject specific entry requirements for the subjects they wish to study.

Subject specific entry requirements are listed in our subject information sheets which will be made available at our Open Evening in November and through the 'Sixth Form' section of our website.

Admissions

All students, both internal and external, must apply for a place in our Sixth Form. For September 2018 admission, applications must be received by **Monday 26 February 2018**. Application forms are available both through our website and the School Office.

For external applicants we will contact their current school to find out their predicted grades. In light of that information, prospective students may be invited to discuss their most suitable course of study.

Open Day

Before deciding upon their final subject combination and submitting their application, students are advised to attend our Open Day on **Thursday 18 January 2018**. The Open Day allows students to experience Sixth Form life and Sixth Form lessons and will help to inform their final subject choices. Students may attend lessons for five different A Level subjects on this day, as well as experiencing our Sixth Form Coffee Lounge and Study Centre. Again, application forms are available both through our website and the School Office. The deadline for Open Day applications is **Monday 11 December 2017**.

It is still possible to apply for a place after the application deadlines, though initially you may have to be put on a reserve list for particular subjects or the Sixth Form itself, if places are already full. It is also possible for you to change your mind about your choice of courses. We will accommodate changes provided these are available within the final timetable. This can happen right up until the start of the September term, as some students will need to change courses when they know their GCSE results.



Spalding Grammar School, Priory Road, Spalding, Lincolnshire PE11 2XH

Telephone: 01775 765800 • Fax: 01775 765801 • Email: sixthformadmissions@spaldinggrammar.lincs.sch.uk

www.spaldinggrammar.lincs.sch.uk